

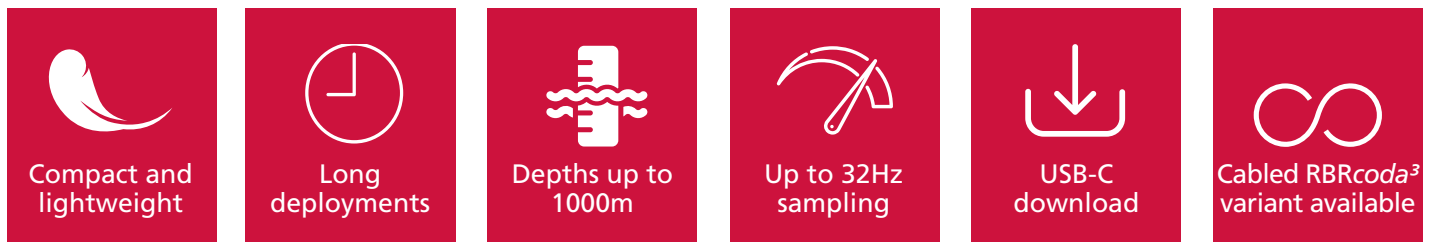
## SMALL TWO-CHANNEL LOGGER



COMPACT,  
ACCURATE,  
DEPENDABLE

The RBRduet<sup>3</sup> T.D is a compact, lightweight, and versatile dual-channel instrument. It provides accurate temperature and pressure measurements during long deployments. Low power consumption, large memory, and ability to endure harsh conditions make it a perfect instrument for many oceanographic applications, including tide levels and wave characteristics.

### FEATURES



The following configurations are available:

- ▶ RBRduet<sup>3</sup> T.D temperature and depth; up to 2Hz continuous sampling
- ▶ RBRduet<sup>3</sup> T.D|fast temperature and depth; up to 8Hz, 16Hz, or 32Hz continuous sampling
- ▶ RBRduet<sup>3</sup> T.D|tide16 temperature and depth; continuous sampling or tidal averaging
- ▶ RBRduet<sup>3</sup> T.D|wave16 temperature and depth; continuous sampling, tidal averaging, or wave burst

The RBRduet<sup>3</sup> T.D facilitates optimal measurement schedules, whether moored, towed, or profiling. Large storage capacity and reliable battery power facilitate long self-contained deployments with higher sampling rates. Downloads are quick with USB-C. A dedicated holder makes it simple to replace desiccant before each deployment. The calibration coefficients are stored with the instrument, and only one software tool, Ruskin, is required to operate it. Datasets can be read directly in Matlab, or exported to Excel, OceanDataView<sup>®</sup>, or text files.

## SMALL TWO-CHANNEL LOGGER

COMPACT, ACCURATE, DEPENDABLE

### Specifications

#### Physical

|               |                           |
|---------------|---------------------------|
| Storage       | ~45 million samples*      |
| Power         | Any AA battery            |
| Communication | USB-C                     |
| Clock drift   | ±60 seconds per year      |
| Diameter      | ~25mm                     |
| Length        | ~266mm                    |
| Weight        | 150g in air, 30g in water |

\*A sample may include multiple readings.

#### Temperature

|                   |                           |
|-------------------|---------------------------|
| Range*            | -5°C to 35°C              |
| Initial accuracy  | ±0.002°C                  |
| Resolution        | <0.00005°C                |
| Typical stability | ±0.002°C / year           |
| Time constant     | <0.1s  fast, <1s standard |

\* A wider temperature range is available upon request. Contact RBR for more information.

#### Pressure

|                   |                                       |
|-------------------|---------------------------------------|
| Range             | 20 / 50 / 100 / 200 / 500 / 1000dbar* |
| Accuracy          | ±0.05% full scale                     |
| Resolution        | <0.001% full scale                    |
| Typical stability | ±0.05% full scale / year              |
| Time constant     | <10ms                                 |

\*Recommended depth for wave measurements is less than 50m.

### Deployment estimates

#### RBRduet<sup>3</sup> T.D

|                |                     |         |             |
|----------------|---------------------|---------|-------------|
| Sampling rates | 24hr to 1s, and 2Hz |         |             |
| Autonomy       | Speed               | Time    | # samples   |
|                | 5s                  | 4 years | ~25 million |
|                | 2Hz                 | 60 days | ~10 million |

#### RBRduet<sup>3</sup> T.D|fast16

|                |                                     |         |             |
|----------------|-------------------------------------|---------|-------------|
| Sampling rates | 24hr to 1s, and 2Hz, 4Hz, 8Hz, 16Hz |         |             |
| Autonomy       | Speed                               | Time    | # samples   |
|                | 16Hz                                | 30 days | ~45 million |

#### RBRduet<sup>3</sup> T.D|fast32

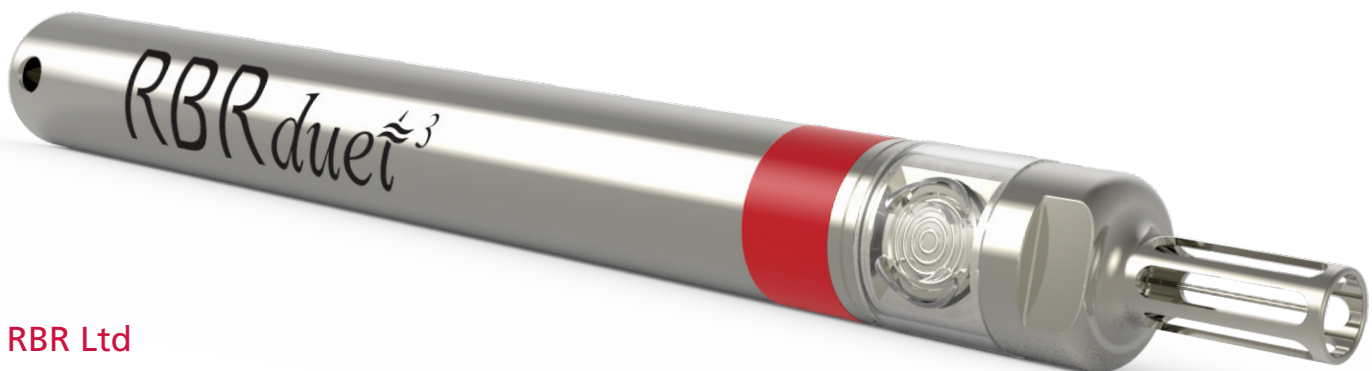
|                |  |         |             |
|----------------|--|---------|-------------|
| Sampling rates | 24hr to 1s, and 2Hz, 4Hz, 8Hz, 16Hz, or 32Hz |         |             |
| Autonomy       | Speed  | Time    | # samples   |
|                | 32Hz   | 16 days | ~45 million |

### Realtime variants

Cabled realtime variants are available as the RBRcoda<sup>3</sup> T.D.

### Deep variant

Explore up to 10km deep with the RBRduet<sup>3</sup> T.D|deep.



### RBR Ltd

+1 613 599 8900  
 info@rbr-global.com  
 rbr-global.com